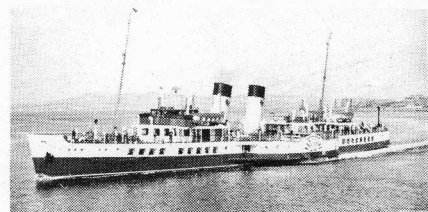


# CLYDE RIVER STEAMER CLUB



## SPECIAL EXCURSION BY P.S. WAVERLEY

from  
Craigendoran, Gourock, Largs and Millport  
to

## INVERARAY

Outward via Kyles of Bute, returning via Garroch Head

on

**SATURDAY, 23 MAY 1970**

CRAIGENDORAN    GOUROCK    DUNOON    LARGS    MILLPORT    INVERARAY

0840 > —————> 0915 > —————> 1015 > —————> 1415  
via Kyles  
2100 < —————< 2030 < —————< 2010 < —————< 1925 < —————< 1855 < —————< 1515  
via Garroch  
Head

### CONNECTING TRAINS —

0744 from Glasgow (Queen Street) to Craigendoran  
0820 from Glasgow (Central) to Gourock  
0810 from Ayr to Largs (change at Kilwinning)  
0929 from Ardrossan (South Beach) to Largs

### CATERING, ETC. —

Luncheon (11/-) and High Tea (9/-) will be served on board the steamer. Children under 10 — 6/- and 5/-.

### TICKETS SHOULD BE OBTAINED IN ADVANCE

In addition teas and refreshments will be available in the Tearoom.

**BOOK EARLY** and take advantage of the cheap rates offered. All correspondence to Mr Ian McCrorie, 17 Kelly St., Greenock.

**BOOKINGS BY POST ONLY**  
or at C.R.S.C. MEETINGS

	Depart	Arrive Back
CRAIGENDORAN	08 40	2100
GOUROCK	09 15	2030
DUNOON	08A35	2010
LARGS	10 15	1925
MILLPORT	09B20	1855

A—Change at Gourock  
B—Change at Largs

**FARE — 25/-**

(30/- if booked on day of trip)

Children still at school — half fare

**IMPORTANT** — If the new car ferry IONA, now fitting out at Troon is in commission by 23 May, it is possible that she will be chartered in place of WAVERLEY. Due notice will be given if this is the case.